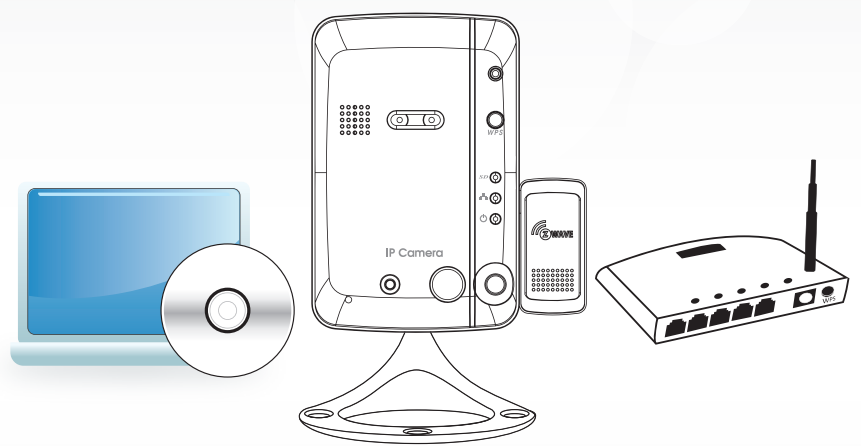
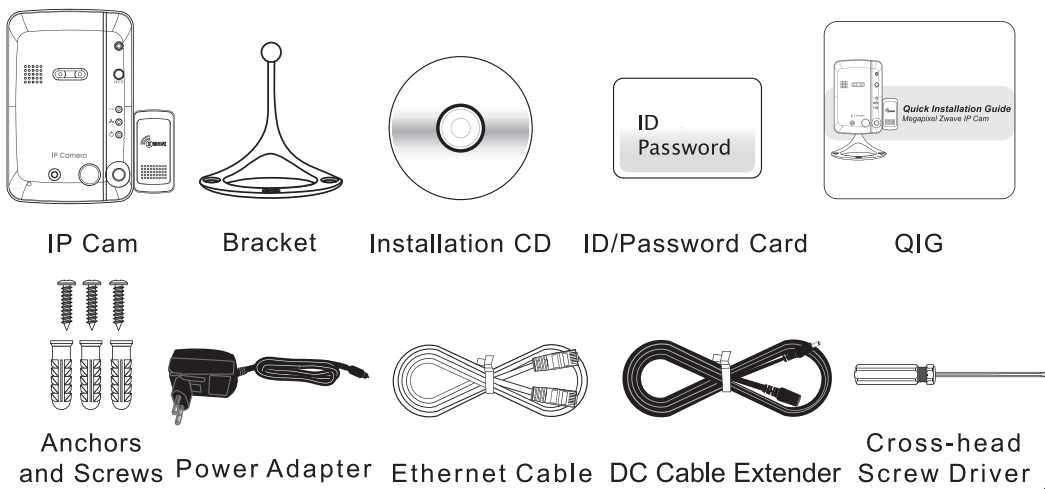


Quick Installation Guide Megapixel Zwave IP Cam

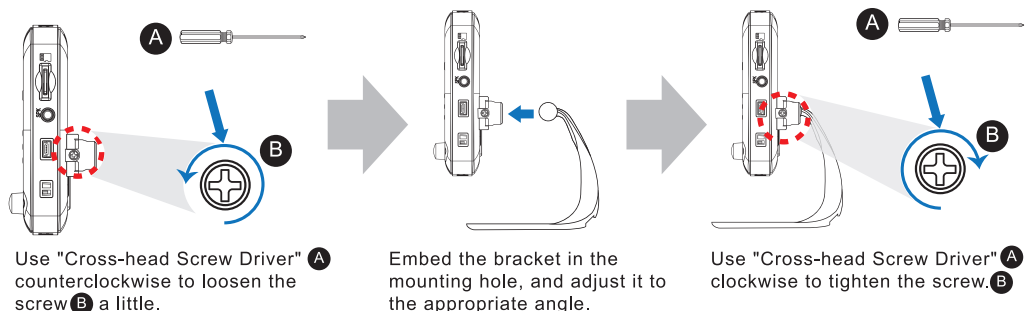


Installation Guide

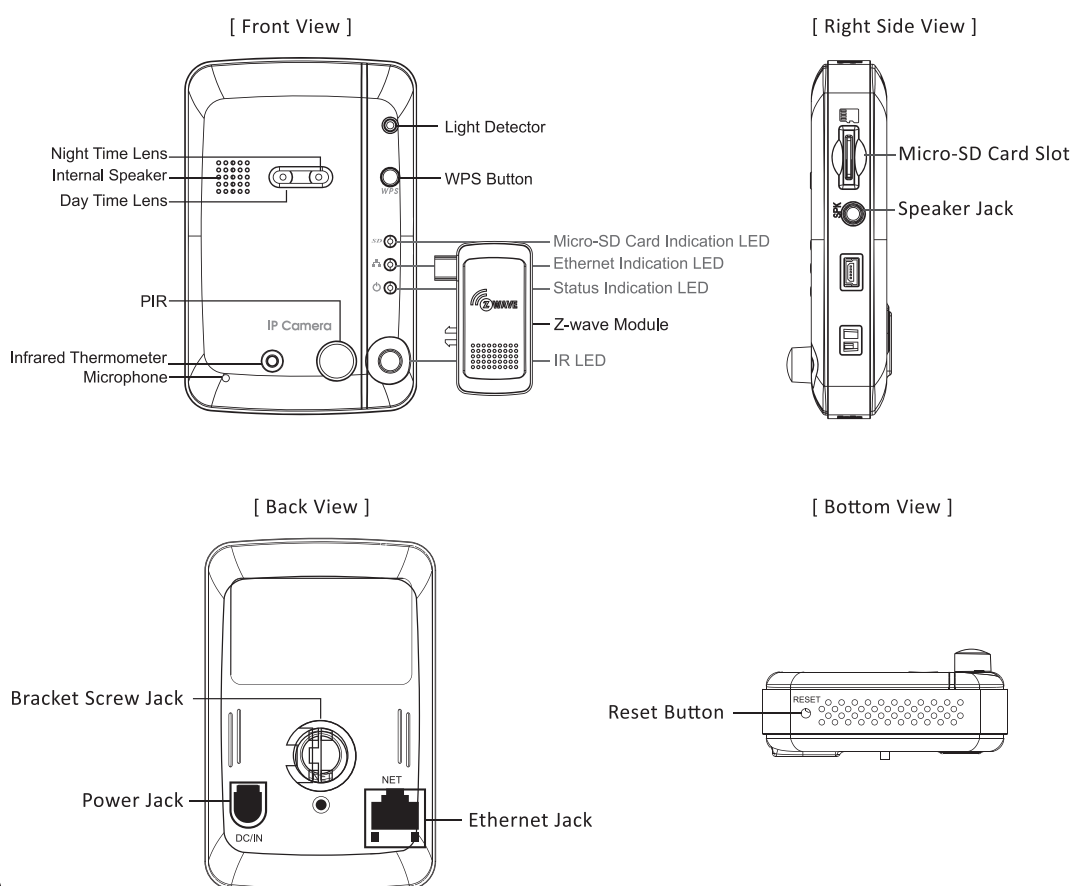
Package Contents



Hardware Installation

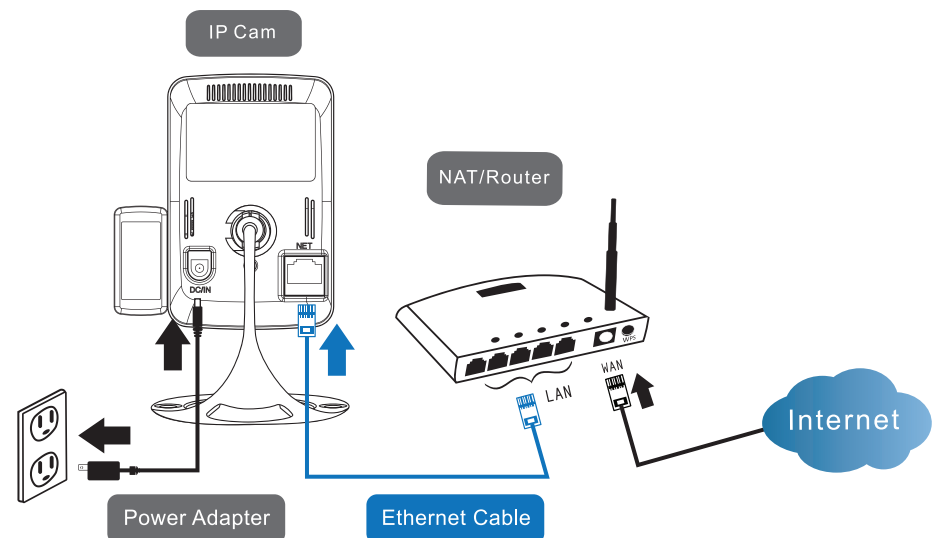


Product View



Step 1.

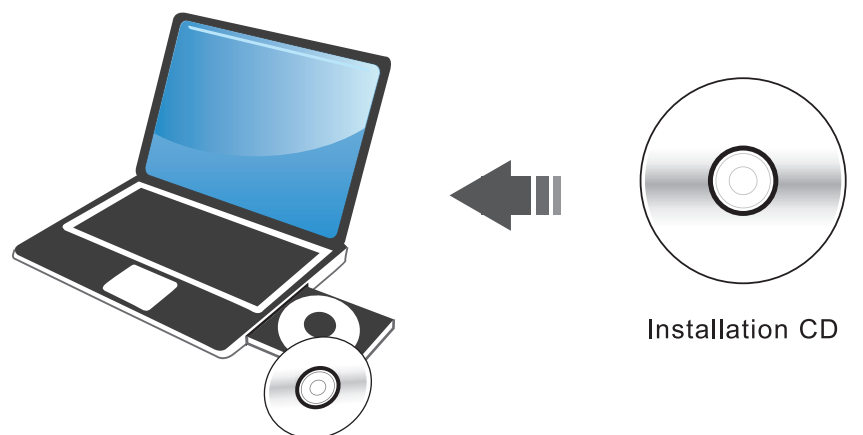
Connect IP Cam to Internet



1. Connect the power adapter.
2. Connect the Ethernet cable to the NAT/Router.
3. The IP camera will get IP address from the NAT/Router (with DHCP enabled) automatically and connect to internet. Check if the red LED of IP camera is always on. If it's blinking, please check step 1 and step 2 again.

Step 2.

Install CamView Software



Put the Installation CD into your computer (with Windows XP/Vista/7). After the setup menu opened, select "Install Management Software" and follow the directions as prompted.

Step 3.

CamView Software Usage

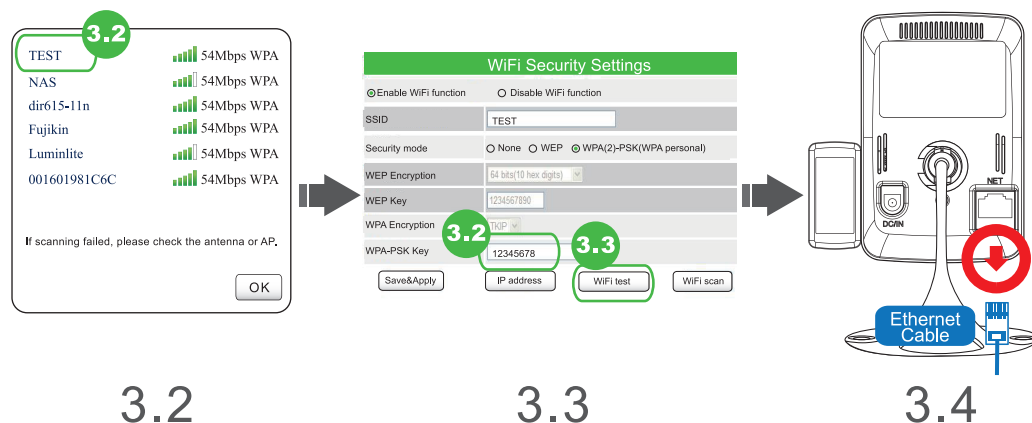


1. Execute the installed CamView software on the desktop or from "Start → Programs → CamView → CamView".
2. The "Auto Search" will display the IP camera in the local network.
3. Double click the camera and key in the password on the ID/password card to see the video.

- ① You can drag the camera on the "Auto Search" area to the "Camera List" area.
- ② You could also add new item on the "Camera List" area by "Camera List" → "New Camera" → Key in camera ID and Password.

Step 4-2-2.

Wireless Setting of IP Cam - If no WPS on router



- 3.2 Choose the wireless AP and key in the encryption key.
- 3.3 Click "WiFi test" button and wait for 20~40 seconds to verify if the encryption key is correct. If "WiFi test" failed, check "encryption key" and repeat step 3.1 and step 3.2 again.

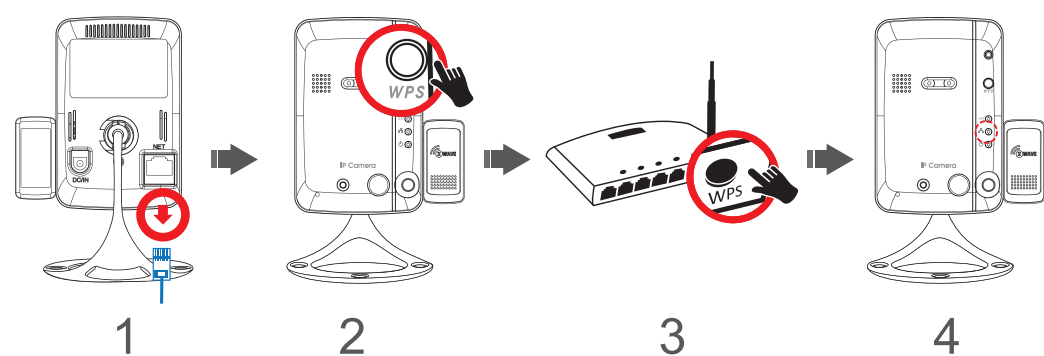
! Please do not remove the Ethernet cable during WiFi test.

- 3.4. If the "WiFi test" succeeded, remove the Ethernet cable from the IP camera to start the wireless connection.

! The blue LED and red LED will be always on after wireless connection is successful.

Step 4-1.

Wireless Setting of IP Cam - If router has WPS button



1. Remove the Ethernet cable from the camera.
2. Press the WPS button on the IP camera.
3. Press the WPS button on the NAT/Router.
4. The blue LED on the IP camera will start blinking. If the blue LED stops blinking and is always on in one minute, the wireless network is connected successfully.

Step 5.

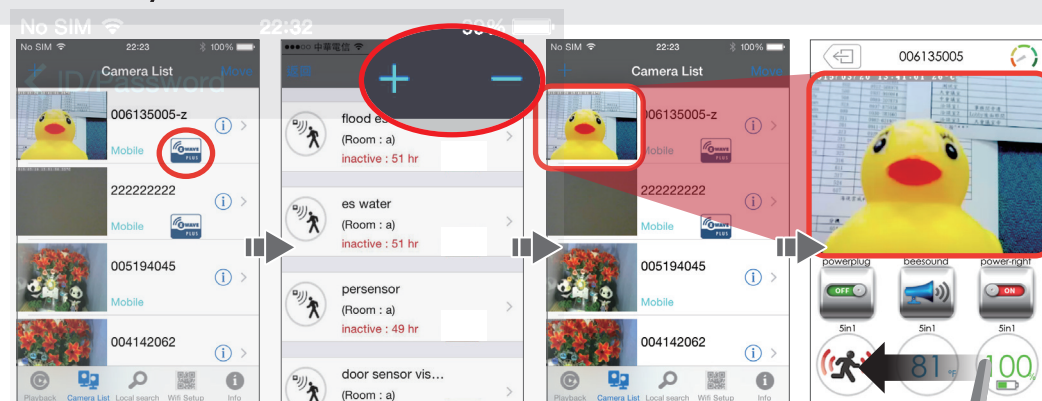
Software for iPhone and Android mobiles



Please search the software name "mCamViewZ+" on the App Store for iPhone or on Android Market for Android mobiles.

Step 6.

Add / Remove Z-Wave Device

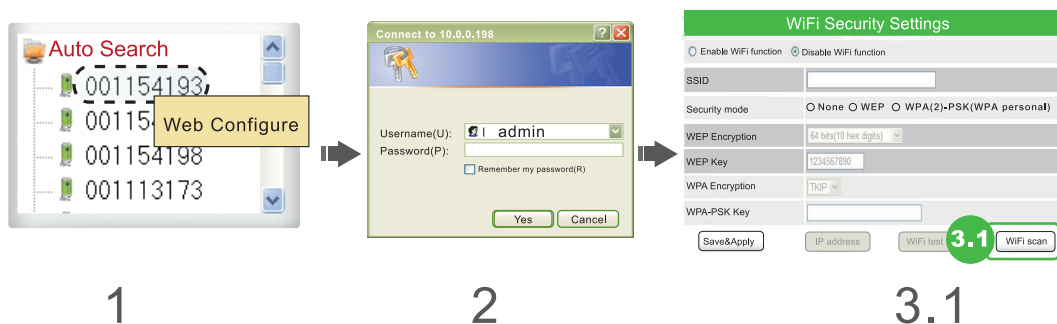


1. Tap "+" to add Z-Wave device and click "ok" to start. Tap "-" to remove Z-Wave device and click "ok" to start.
2. Tap the thumbnail to view the live video.
3. Scroll left the screen to check or control Z-Wave device.

Step 4-2-1.

Wireless Setting of IP Cam - If no WPS on router

! Please make sure the Ethernet cable is connected to the IP Cam !



1. Right click camera on the "Auto Search" area and click "Web Configure".
2. Key in the admin account and password to enter the web configuration page.

! The default admin account is "admin", and no password.

3. Four steps to setup the wireless connection:
 - 3.1 Click the "WiFi Scan" button, all the available wireless AP will be listed in 10 seconds.

FAQs

Q1. What should I do if I forgot the password or the ID/Password card is missing?

Please press the "reset" button for five seconds. The IP camera will be reset to the factory default settings. The default admin account is "admin", and no password. The default video-play password is "ipcam".

Q2. How could I use IE browser to see the live video?

Please visit <http://www.starvedia.com/live.html> and key in the Cam ID and password on the ID/Password card to see the live video.

Q3. What should I do if I cannot see the video remotely?

The red LED of the IP camera should be always on when the IP camera is connected to the Internet. If the red LED is blinking, please double check the network connection and settings again.

Q4. Where to download the latest CamView software?

Please download the latest CamView software with the following information :
 Website: <http://www.starvedia.com/download.html>
 Username: viewer
 Password: camview

Note: SD Speed Class 10 is recommended for SD card recording.

More FAQs, please visit www.starvedia.com/FAQ01_list.html